

PRODUCT IDENTIFICATION

Prescription Opioid** Analgesics and Stimulants Marketed in Canada

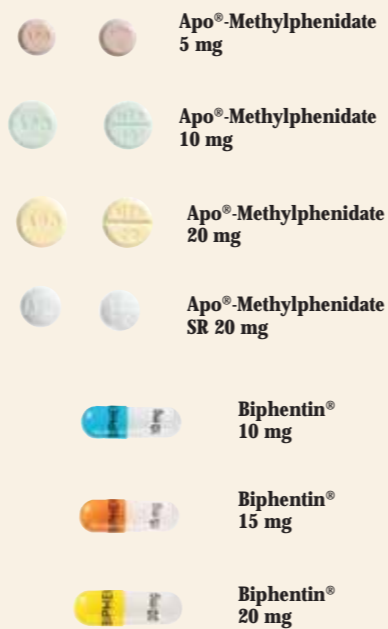
© Photos are copyright of Purdue Pharma and may not be reproduced in any format without written permission. Pamphlet is posted on www.purdue.ca

STIMULANTS

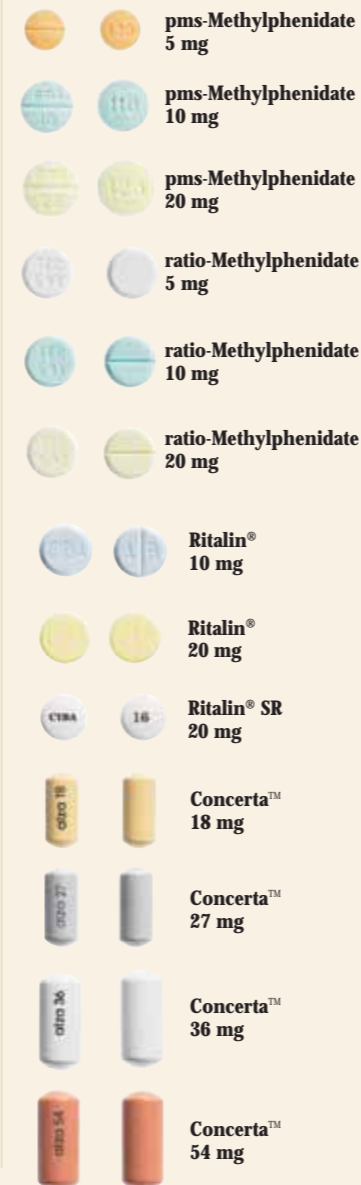
Amphetamine



Methylphenidate



Methylphenidate



Dextroamphetamine



OPIOIDS

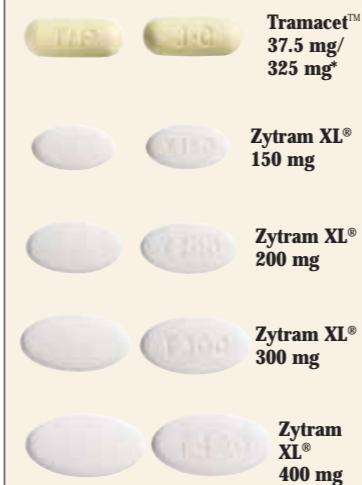
Pentazocine



Propoxyphene



Tramadol



Notice: While every effort has been made to reproduce these drugs in an accurate manner, variations in colour and size may exist because of the photographic reproduction and printing processes. Pamphlet attempts to summarize the marketed tablet/capsule/patch opioid/stimulant products, but may not be all inclusive. It is noted that there may be other opioid/stimulant brands marketed from time to time that are not shown in this pamphlet. Positive identification of any drug requires analysis by an authorized laboratory.

* Combination Preparation — contains opioid and non-opioid drug substance(s).
 ** Opioid refers broadly to all compounds related to opium.

July 2007



PRODUCT IDENTIFICATION

Prescription Opioid Analgesics and Stimulants Marketed in Canada

Presented as an educational service by
Purdue Pharma

ENDORSED BY



For more information
on pain management, visit
www.purdue.ca



Purdue Pharma Inc.
General Partner of / commandite de
Purdue Pharma
Pickering, Ontario L1W 3V8

© Photos are copyright of Purdue Pharma and may not be reproduced in any format without written permission.

Pamphlet is posted on www.purdue.ca

OPIOIDS

Butorphanol



Apo-Butorphanol
10 mg/mL



pms-Butorphanol
10 mg/mL

PRODUCT IDENTIFICATION

Prescription Opioid** Analgesics and Stimulants Marketed in Canada

© Photos are copyright of Purdue Pharma and may not be reproduced in any format without written permission.
Pamphlet is posted on www.purdue.ca

Codeine

Codeine

- | | | | |
|--|-----------------------------------|--|--------------------------------|
| | Codeine Contin® 50 mg | | Exdol-30* 30 mg |
| | Codeine Contin® 100 mg | | ratio-Emtec-30* 30 mg |
| | Codeine Contin® 150 mg | | ratio-Lenoltec No. 2* 15 mg |
| | Codeine Contin® 200 mg | | ratio-Lenoltec No. 3* 30 mg |
| | pms-Codeine Phosphate 15 mg | | ratio-Lenoltec No. 4* 60 mg |
| | pms-Codeine Phosphate 30 mg | | Tylenol® No. 2* 15 mg |
| | ratio-Codeine 15 mg | | Tylenol® No. 3* 30 mg |
| | ratio-Codeine 30 mg | | Tylenol® No. 4* 60 mg |
| | Atasol®-15* 15 mg | | Fiorinal® C1/4* 15 mg |
| | Atasol®-30* 30 mg | | Fiorinal® C1/2* 30 mg |
| | 282** 15 mg | | ratio-Tecnal C1/4* 15 mg |
| | 282 MEP** 15 mg | | ratio-Tecnal C1/2* 30 mg |
| | 292** 30 mg | | |

Fentanyl

Fentanyl

- | | | | |
|--|--------------------------|--|----------------------------|
| | Duragesic® 12 µg/h | | RAN™-Fentanyl 75 µg/h |
| | Duragesic® 25 µg/h | | RAN™-Fentanyl 100 µg/h |
| | Duragesic® 50 µg/h | | ratio-Fentanyl 25 µg/h |
| | Duragesic® 75 µg/h | | ratio-Fentanyl 50 µg/h |
| | Duragesic® 100 µg/h | | ratio-Fentanyl 75 µg/h |
| | RAN™-Fentanyl 25 µg/h | | ratio-Fentanyl 100 µg/h |

Notice: While every effort has been made to reproduce these drugs in an accurate manner, variations in colour and size may exist because of the photographic reproduction and printing processes. Pamphlet attempts to summarize the marketed tablet/capsule/patch opioid/stimulant products, but may not be all inclusive. It is noted that there may be other opioid/stimulant brands marketed from time to time that are not shown in this pamphlet. Positive identification of any drug requires analysis by an authorized laboratory.

* Combination Preparation — contains opioid and non-opioid drug substance(s).

** Opioid refers broadly to all compounds related to opium.

July 2007

Methadone

- | | |
|--|----------------|
| | Metadol™ 1 mg |
| | Metadol™ 5 mg |
| | Metadol™ 10 mg |
| | Metadol™ 25 mg |

Meperidine

- | | |
|--|-------------------|
| | Demerol® 50 mg |
|--|-------------------|

Nabilone

- | | |
|--|--------------------|
| | Cesamet® 0.5 mg |
| | Cesamet® 1 mg |

Oxycodone

- | | |
|--|--|
| | Supedol® 5 mg |
| | Supedol® 10 mg |
| | Supedol® 20 mg |
| | Oxy-IR® 5 mg |
| | Oxy-IR® 10 mg |
| | Oxy-IR® 20 mg |
| | OxyContin® 5 mg |
| | OxyContin® 10 mg |
| | OxyContin® 20 mg |
| | OxyContin® 40 mg |
| | OxyContin® 80 mg |
| | Endocet** 5 mg |
| | Endodan** 5 mg |
| | Percocet** 5 mg |
| | Percocet® Demi* 2.5 mg |
| | Percodan** 5 mg |
| | pms-Oxycodone- Acetaminophen* 5 mg |
| | ratio-Oxycocet* 5 mg |
| | ratio-Oxycodan* 5 mg |

Morphine

- | | |
|--|----------------------------------|
| | Statex® 5 mg |
| | Statex® 10 mg |
| | Statex® 25 mg |
| | Statex® 50 mg |
| | MS-IR® 5 mg |
| | MS-IR® 10 mg |
| | MS-IR® 20 mg |
| | MS-IR® 30 mg |
| | pms-Morphine Sulfate SR 15 mg |
| | pms-Morphine Sulfate SR 30 mg |
| | pms-Morphine Sulfate SR 60 mg |
| | MS Contin® 15 mg |
| | MS Contin® 30 mg |
| | MS Contin® 60 mg |
| | MS Contin® 100 mg |
| | MS Contin® 200 mg |
| | ratio-Morphine SR 15 mg |
| | ratio-Morphine SR 30 mg |
| | ratio-Morphine SR 60 mg |

Morphine

- | | |
|--|----------------------------|
| | M-Eslon® 10 mg |
| | M-Eslon® 15 mg |
| | M-Eslon® 30 mg |
| | M-Eslon® 60 mg |
| | M-Eslon® 100 mg |
| | M-Eslon® 200 mg |
| | Kadian® 10 mg |
| | Kadian® 20 mg |
| | Kadian® 50 mg |
| | Kadian® 100 mg |
| | M.O.S.-Sulfate 5 5 mg |
| | M.O.S.-Sulfate 10 10 mg |
| | M.O.S.-Sulfate 50 50 mg |
| | M.O.S.® 10 10 mg |
| | M.O.S.® 20 20 mg |
| | M.O.S.® 40 40 mg |
| | M.O.S.® 60 60 mg |
| | M.O.S.-SR® 30 mg |
| | M.O.S.-SR® 60 mg |